

# CALUM SRIGLEY DESIGN CONSULTANT

## PLACE MAKER

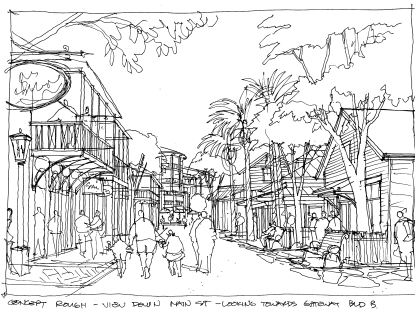
CALUM SRIGLEY is an award-winning designer, architectural visualizer and illustrator who specializes in architectural theming and placemaking. He is passionate about heightening a viewers' perception and understanding of how place affects our experiences. Training at the School of Architecture, University of Edinburgh, Scotland, and 25 years experience have given him a working knowledge of many or most architectural styles. He is continually expanding his knowledge and has one of the largest private libraries of architectural books in Vancouver.

Calum works in his studio from a design brief or within a team setting on-site, at design charrettes, envisioning sessions and planning meetings, producing sketch designs and graphics that illustrate the discussion and communicate "place". His large and varied client list includes resort and residential developers as well as architects.

## FIRM OVERVIEW

Calum Srigley Design Consultant Ltd. is a firm based in Vancouver, B.C., Canada and offers design consulting services in the following general areas:

- Concept Development
- Architectural Theming
- Architectural Illustrations
- Residential Design



Baytowne Wharf, Sandestin, Florida

*"I am fascinated by the language of villages and towns. The buildings, forms and spaces, details and materials are shaped by nature, whimsy and everyday life. The village becomes the story of its inhabitants, and that's what my drawings do. They tell the story of a place."*

Calum Srigley

**CALUM SRIGLEY**  
**DESIGN CONSULTANT**

---

**PROJECTS INCLUDE** Veranda Residential Resort, Turks and Caicos  
San Miguel Four Seasons Resort, Puerto Rico  
The Vacation Club at Yamay Resort, Taichung, Taiwan  
Montelago Village, Lake Las Vegas, Intrawest Developments  
Village at Mountain Creek, New Jersey, Intrawest Developments  
Copper Mountain Resort, Colorado, Intrawest Developments  
Baytowne Wharf Resort Village, Sandestin, Florida, Intrawest Developments  
Planned Housing Developments, Bangkok  
Crofton Springs Residential Development, Issaquah, Washington  
City of Calgary - Midtown Planning Document, Calgary, Alberta  
Peabody Residence, Whistler, BC  
Chu Residence, Vancouver, BC  
Domus Condominium Tower, Vancouver, BC  
Eden Condominium Tower, Vancouver, BC  
Honua Kai Residential Resort Development, Hawaii

**CLIENTS INCLUDE** Intrawest Corporation, Vancouver, BC  
Envisioning and Storytelling, West Vancouver, BC  
Concert Properties Ltd., Vancouver, BC  
Intracorp Developments Ltd., Vancouver, BC  
Polygon Properties Ltd., Vancouver, BC  
Raymond Letkeman Architects Inc., Vancouver, BC  
The Dwelling Company, Seattle, Washington  
Bosa Properties, Burnaby BC  
Goldenland PLC Bangkok, Thailand  
City of Richmond, Richmond, BC  
University of B.C., Properties Trust, Vancouver, BC  
RDG Planning and Design, Bangkok, Thailand  
Port Blakely Communities, Seattle, Washington



Peabody Residence, Whistler, BC



Eden Condominium Tower, Vancouver, BC

# CALUM SRIGLEY DESIGN CONSULTANT

---

## EDUCATION

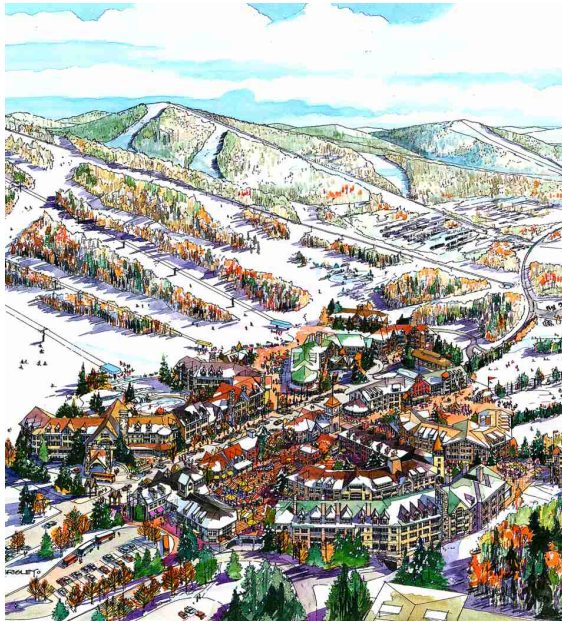
Building Technology Diploma, BCIT, Vancouver, BC 1976  
University of Edinburgh, School of Architecture  
Edinburgh, Scotland 1977 - 1979

## AWARDS

Governor Generals Award for Residential Design  
Honorable Mention 1985  
City of Vancouver Heritage Award 1986

## EXPERIENCE

1975 - 1977 Building Technologist, Zoltan Kiss Architects  
1979 - 1987 Design Associate, Raymond Letkeman Architects  
1982 - 1988 Calum Srigley Delineator Architectural Illustrations Service  
1988 - now Calum Srigley Design Consultant Ltd. Incorporated 1988



# CALUM SRIGLEY DESIGN CONSULTANT

## TESTIMONIALS

*"We are in the business of encouraging people to look into the future-to see what could be. No one is better than Cal at illustrating the possibilities-of allowing people to see into their mind's eye."*

*Paul Smith [ Founder: Envisioning & Storytelling ]*

*"Cal's contribution to the conceptual design of many of our resortprojects is invaluable. He has a unique ability to translate words and crystalize design concepts into evocative architectural images."*

*Donal O'Callaghan [ Vice President, Intrawest Placemaking ]*

*"Cal's quick ability to comprehend a project design and intent and thento translate it into his wonderful graphic representations make him an invaluable team member."*

*Ray Letkman [ Raymond Letkeman Architects Inc ]*

## REFERENCES

<b>Raymond Lettkeman</b> , President, RLA Architects	(604) 669-3339
<b>Dale Bosa</b> , Vice President of Development, BOSA Properties	(604) 299-1363
<b>Maurice Pez</b> , Vice President of Development, Concert Properties	(604) 602-3726
<b>Donal O'Callaghan</b> , Vice President of Design, Intrawest Placemaking	(604) 669-9777
<b>Diana McMeekin</b> , President, Artemis Marketing Group	(604) 733-5253
<b>Paul Smith</b> , Principal, Envisioning and Storytelling	(604) 913-2226
<b>Pritpal Singh Gill</b> , Head of Development, Goldenland PLC, Thailand	(662) 652-1111



Passage Pointe Copper Mountain, Colorado



Model Residence, Golden Heritage Development, Bangkok

**CALUM SRIGLEY**  
**DESIGN CONSULTANT**

---

**SCHEDULE OF FEES**

All contractual arrangements are to be confirmed in writing.

**CANADIAN**

**Canadian Dollars**

hourly ..... \$225.00/hr.  
daily (7 hr. workday).....\$1600.00/day  
set fee ..... \$ net based on approved scope of work  
(exclusive of disbursements)

minimum job (half day) .....\$ 800.00  
consultations .....initial consultation, no charge

**Travel Rates**

half hourly rate for travel during the business day  
travel by air will be .....economy class under 5 hrs duration  
business class over 5 hrs duration

**Disbursements**

printing, scanning, plotting, couriers, etc ..... at cost plus 10%  
travel, accommodation, car rentals etc..... at cost  
accommodation - executive class,with business centre ..... at cost

GST is applicable on all work  
PST is applicable on Illustrations for market purposes only.

**Terms**

accounts will be presented monthly, payable within 30 days.

**CALUM SRIGLEY**  
**DESIGN CONSULTANT**

**SCHEDULE OF FEES**

All contractual arrangements are to be confirmed in writing.

**AMERICAN**

**American Dollars**

hourly ..... \$200.00/hr.  
 daily (7 hr. workday).....\$1400.00/day  
 set fee ..... \$ net based on approved scope of work  
 (exclusive of disbursements)

minimum job (half day) .....\$ 700.00  
 consultations .....initial consultation, no charge

**Travel Rates**

half hourly rate for travel during the business day  
 travel by air will be ..... economy class under 5 hrs duration  
 ..... business class over 5 hrs duration  
 travel by car ..... 0.25 cents/mile

**Disbursements**

printing, scanning, plotting, couriers, etc ..... at cost plus 10%  
 travel, accommodation, car rentals etc..... at cost  
 accommodation - executive class,with business centre ..... at cost

please note: disbursements billing will be converted to US funds  
 using current bank exchange rates.

**Terms**

accounts will be presented monthly, payable within 30 days.

**CALUM SRIGLEY**  
**DESIGN CONSULTANT**

---

**SCHEDULE OF FEES**

All contractual arrangements are to be confirmed in writing.

**INTERNATIONAL**

**American Dollars**

hourly ..... \$200.00/hr.  
daily (7 hr. workday).....\$1400.00/day  
set fee ..... \$ net based on approved scope of work  
(exclusive of disbursements)

minimum job (half day) .....\$ 700.00  
consultations .....initial consultation, no charge

**Travel Rates**

half hourly rate for travel during the business day  
travel by air be business class and must be prepaid in advance of departure.

**Disbursements**

printing, scanning, plotting, couriers, etc ..... at cost plus 10%  
travel, accommodation, car rentals etc..... at cost  
accommodation - executive class,with business centre ..... at cost

please note: disbursements billing will be converted to US funds  
using current bank exchange rates.

**Terms**

minimum 10% of Net is fee to be received prior to travel all travel expenses to be  
paid in advance of departure accounts to be presented monthly for payment in 15 days  
payment to be made by bank transfer (account details will be provided).



**DEVELOPMENT CONCEPTS**

**PRELIMINARY  
CONCEPTS**







Lobby



Arrival



**Building Character**

A contemporary image, but not cold. Should be "approachable", timeless and warm.

Pacific Northwest in character with references to Asian Fusion, ie (Singapore Contemporary)

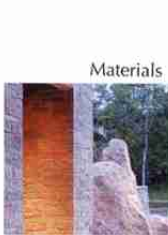
The horizontal line should be stressed, through elements such as window railings, balcony rails, sun shades and screens.

Natural materials should be highlighted. Stone Mosaic in places, with rich natural wood tones. As an accent. Colours should have a depth and Patina, not flat.

A lightness of touch in the massing and detail. Of elements should be sought. Avoid heavy lines at glazed bays, canopies etc.



Texture



Materials

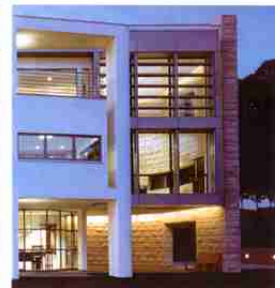
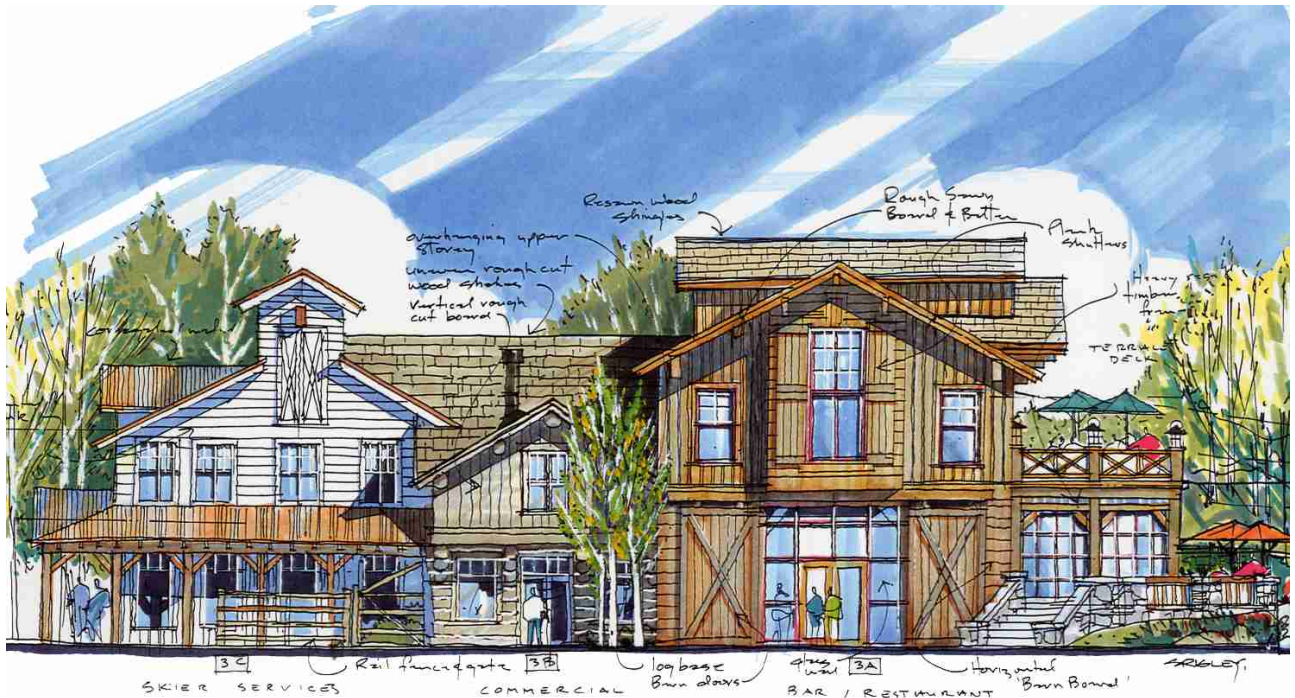


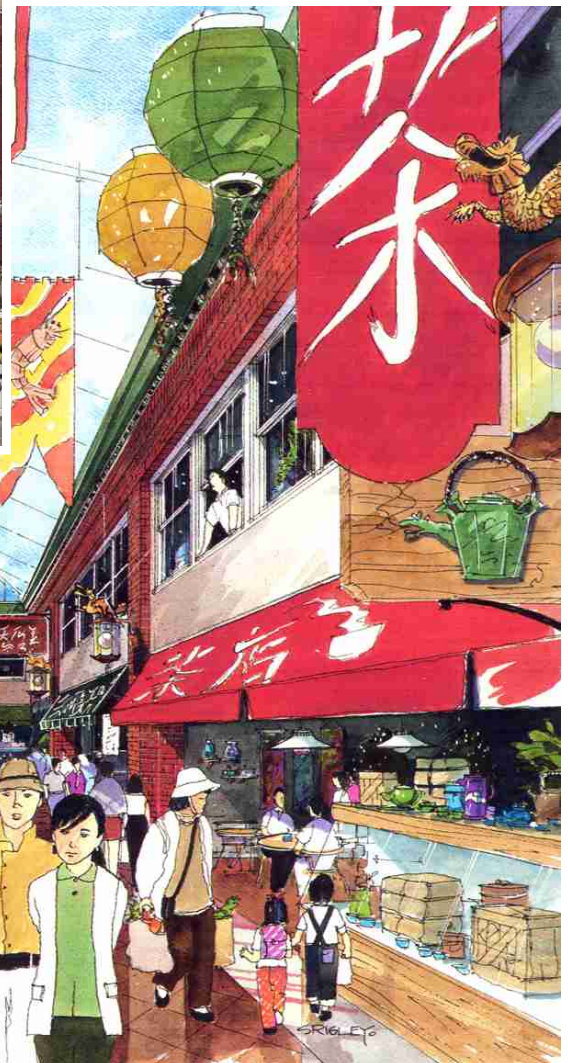
Image & Character Study

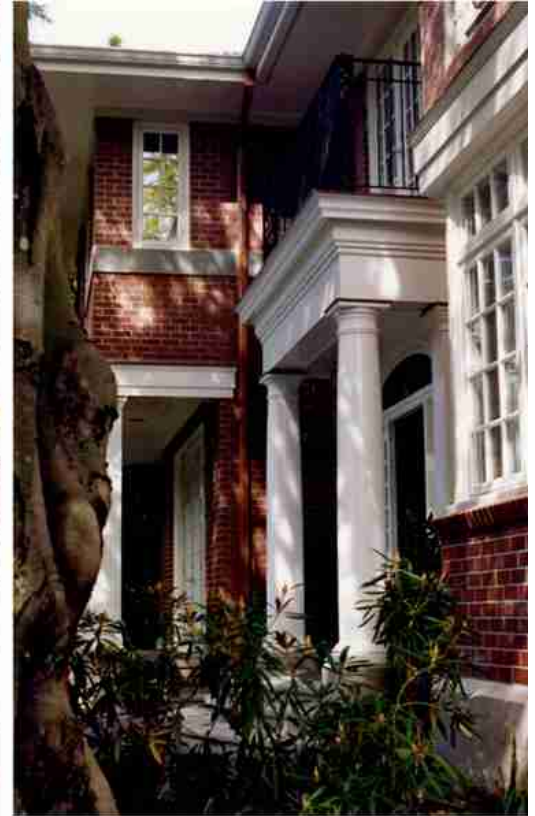
West Eighth Residential for Intracorp Development

**IMAGE BOARDS**

**ELEVATION THEME STUDIES**







**Chu Residence**  
Vancouver, B.C.  
8000 sq. ft.

